

Garden



BOTANIKA
NATURE RESIDENCES



The Palms Country Club

Central Gardens

Unit Garden A
5BR Bi-level Unit
Total Area: ± 323 sq. m.
Livable Area: ± 300 sq. m.



Unit Garden B
3BR Garden Flat
Total Area: ± 230 sq. m.
Livable Area: ± 184 sq. m.

Unit Garden D
3BR Bi-level Unit
Total Area: ± 263 sq. m.
Livable Area: ± 239 sq. m.

Unit Garden C
5BR Bi-level Unit
Total Area: ± 327 sq. m.
Livable Area: ± 303 sq. m.

Laguna Heights Drive Palms Pointe

- 2 BR Deluxe
- 2 BR Premiere
- 3 BR Deluxe
- 3 BR Premiere
- Garden Unit
- Penthouse Unit

Second Floor



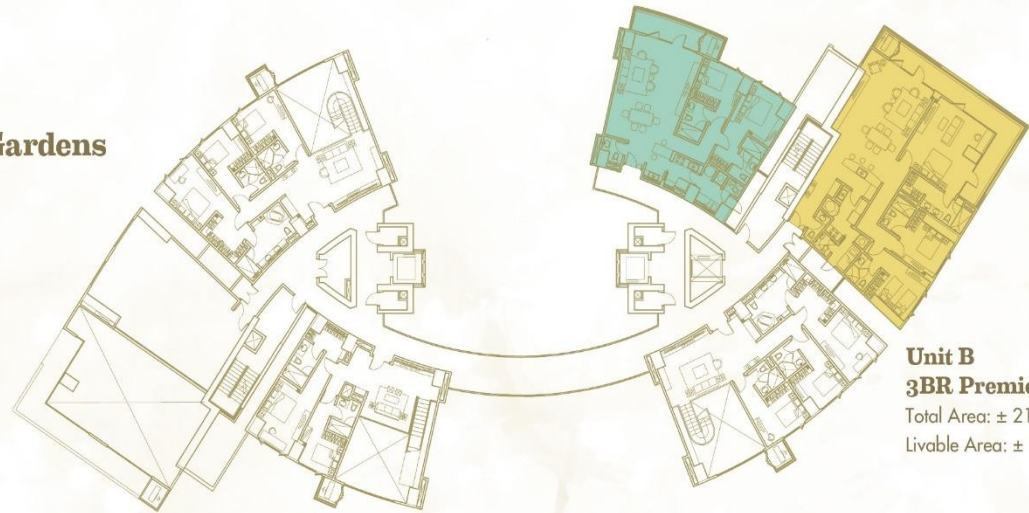
Central Gardens

Unit A
2BR Premiere

Total Area: ± 143 sq. m.

Livable Area: ± 134 sq. m.

**The Palms
Country Club**



Unit B
3BR Premiere

Total Area: ± 218 sq. m.

Livable Area: ± 187 sq. m.

**Laguna Heights Drive
Palms Pointe**

- 2 BR Deluxe
- 2 BR Premiere
- 3 BR Deluxe
- 3 BR Premiere
- Garden Unit
- Penthouse Unit

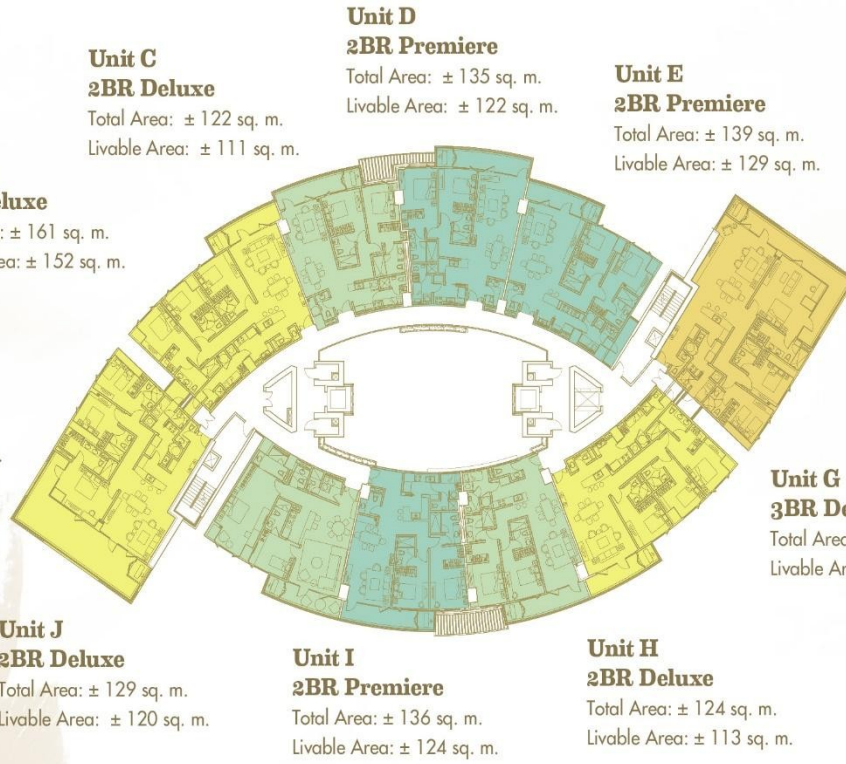
Third Floor



The Palms Country Club

Central Gardens

Laguna Heights Drive Palms Pointe



Unit A
3BR Deluxe
Total Area: ± 215 sq. m.
Livable Area: ± 163 sq. m.

Unit B
3BR Deluxe
Total Area: ± 161 sq. m.
Livable Area: ± 152 sq. m.

Unit C
2BR Deluxe
Total Area: ± 122 sq. m.
Livable Area: ± 111 sq. m.

Unit D
2BR Premiere
Total Area: ± 135 sq. m.
Livable Area: ± 122 sq. m.

Unit E
2BR Premiere
Total Area: ± 139 sq. m.
Livable Area: ± 129 sq. m.

Unit F
3BR Premiere
Total Area: ± 215 sq. m.
Livable Area: ± 184 sq. m.

Unit G
3BR Deluxe
Total Area: ± 161 sq. m.
Livable Area: ± 152 sq. m.

Unit J
2BR Deluxe
Total Area: ± 129 sq. m.
Livable Area: ± 120 sq. m.

Unit I
2BR Premiere
Total Area: ± 136 sq. m.
Livable Area: ± 124 sq. m.

Unit H
2BR Deluxe
Total Area: ± 124 sq. m.
Livable Area: ± 113 sq. m.

Fifth to Seventh Floor



Unit B
3BR Deluxe
Total Area: ± 161 sq. m.
Livable Area: ± 152 sq. m.

Unit C
2BR Deluxe
Total Area: ± 122 sq. m.
Livable Area: ± 111 sq. m.

Unit D
2BR Premiere
Total Area: ± 135 sq. m.
Livable Area: ± 122 sq. m.

Unit E
2BR Premiere
Total Area: ± 139 sq. m.
Livable Area: ± 129 sq. m.

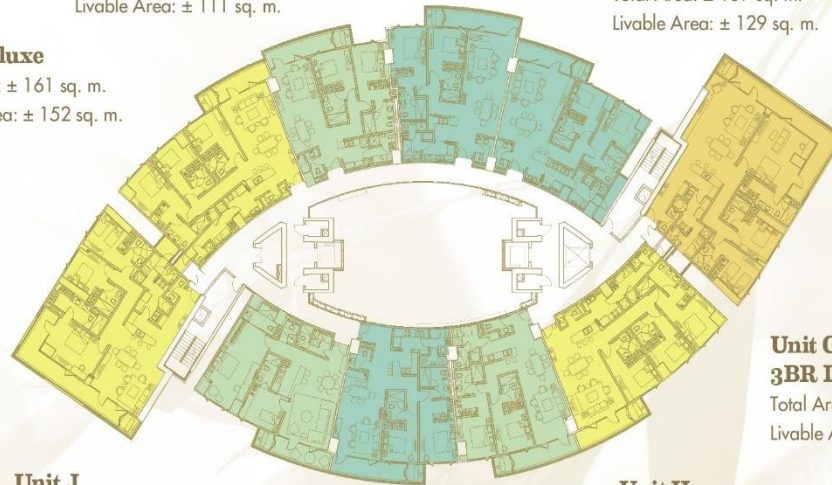


BOTANIKA
NATURE RESIDENCES

**The Palms
Country Club**

Central Gardens

Unit A
3BR Deluxe
Total Area: ± 191 sq. m.
Livable Area: ± 163 sq. m.



Unit F
3BR Premiere
Total Area: ± 215 sq. m.
Livable Area: ± 184 sq. m.

Unit G
3BR Deluxe
Total Area: ± 161 sq. m.
Livable Area: ± 152 sq. m.



Unit J
2BR Deluxe
Total Area: ± 129 sq. m.
Livable Area: ± 120 sq. m.

Unit I
2BR Premiere
Total Area: ± 136 sq. m.
Livable Area: ± 124 sq. m.

Unit H
2BR Deluxe
Total Area: ± 124 sq. m.
Livable Area: ± 113 sq. m.

**Laguna Heights Drive
Palms Pointe**



Eighth to Eleventh Floor



Unit B
3BR Deluxe
Total Area: ± 161 sq. m.
Livable Area: ± 152 sq. m.

Central Gardens

Unit A
3BR Deluxe
Total Area: ± 191 sq. m.
Livable Area: ± 163 sq. m.

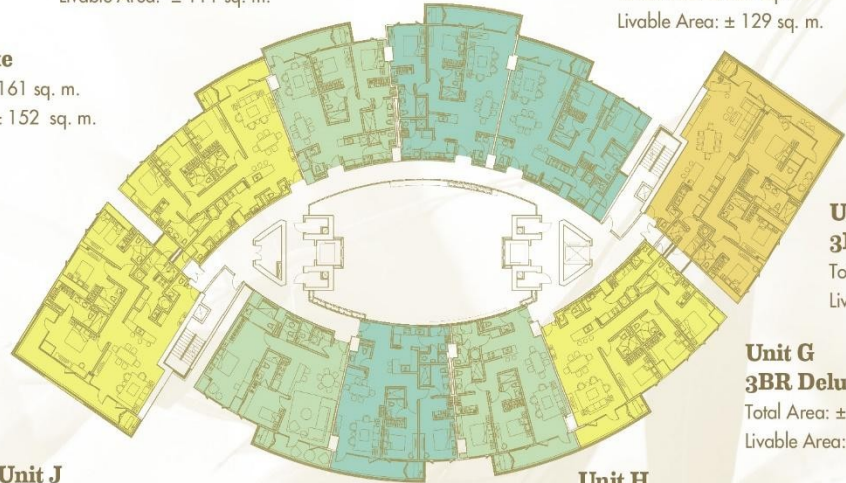


Unit J
2BR Deluxe
Total Area: ± 129 sq. m.
Livable Area: ± 120 sq. m.

Unit I
2BR Premiere
Total Area: ± 136 sq. m.
Livable Area: ± 124 sq. m.

Unit H
2BR Deluxe
Total Area: ± 124 sq. m.
Livable Area: ± 113 sq. m.

Laguna Heights Drive Palms Pointe



Unit C
2BR Deluxe
Total Area: ± 122 sq. m.
Livable Area: ± 111 sq. m.

Unit D
2BR Premiere
Total Area: ± 135 sq. m.
Livable Area: ± 122 sq. m.

Unit E
2BR Premiere
Total Area: ± 139 sq. m.
Livable Area: ± 129 sq. m.

Unit F
3BR Premiere
Total Area: ± 213 sq. m.
Livable Area: ± 182 sq. m.

Unit G
3BR Deluxe
Total Area: ± 161 sq. m.
Livable Area: ± 152 sq. m.



BOTANIKA
NATURE RESIDENCES

The Palms Country Club

Twelfth Floor



BOTANIKA
NATURE RESIDENCES

**The Palms
Country Club**

**Laguna Heights Drive
Palms Pointe**

Unit A
3BR Deluxe
Total Area: ± 164 sq. m.
Livable Area: ± 155 sq. m.

Unit B
2BR Deluxe
Total Area: ± 122 sq. m.
Livable Area: ± 111 sq. m.

Unit C
2BR Premiere
Total Area: ± 135 sq. m.
Livable Area: ± 122 sq. m.

Unit D
2BR Premiere
Total Area: ± 139 sq. m.
Livable Area: ± 129 sq. m.

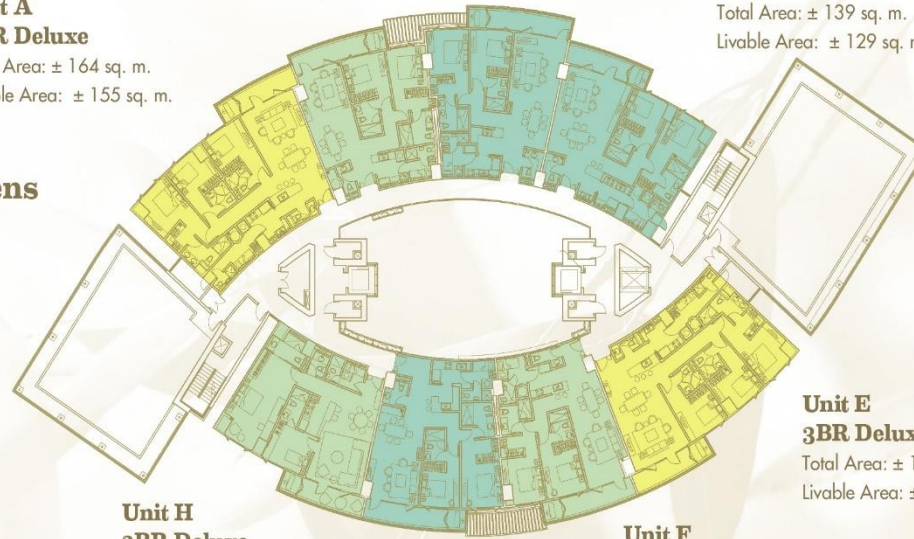
Unit E
3BR Deluxe
Total Area: ± 165 sq. m.
Livable Area: ± 156 sq. m.

Unit H
2BR Deluxe
Total Area: ± 129 sq. m.
Livable Area: ± 120 sq. m.

Unit G
2BR Premiere
Total Area: ± 136 sq. m.
Livable Area: ± 124 sq. m.

Unit F
2BR Deluxe
Total Area: ± 124 sq. m.
Livable Area: ± 113 sq. m.

Central Gardens



Lower Penthouse



BOTANIKA
NATURE RESIDENCES



The Palms Country Club

Unit LP-A 2BR Suite

Total Area: ± 238 sq. m.
Livable Area: ± 114 sq. m.

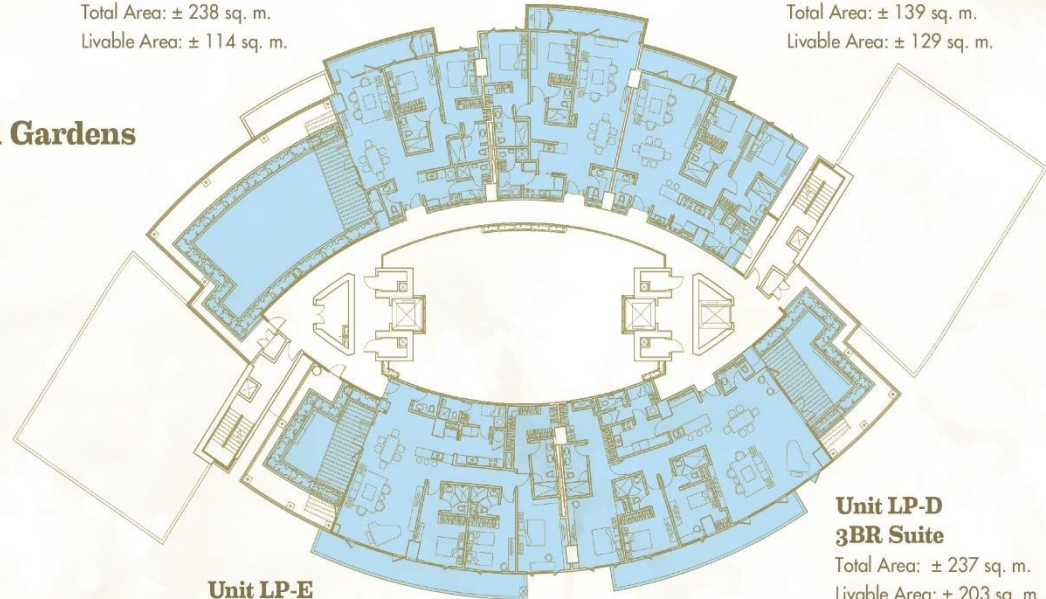
Unit LP-B 2BR Suite

Total Area: ± 135 sq. m.
Livable Area: ± 122 sq. m.

Unit LP-C 2BR Suite

Total Area: ± 139 sq. m.
Livable Area: ± 129 sq. m.

Central Gardens



Unit LP-E 3BR Suite

Total Area: ± 225 sq. m.
Livable Area: ± 186 sq. m.

Unit LP-D 3BR Suite

Total Area: ± 237 sq. m.
Livable Area: ± 203 sq. m.

Laguna Heights Drive Palms Pointe

- 2 BR Deluxe
- 2 BR Premiere
- 3 BR Deluxe
- 3 BR Premiere
- Garden Unit
- Penthouse Unit

Upper Penthouse



The Palms Country Club

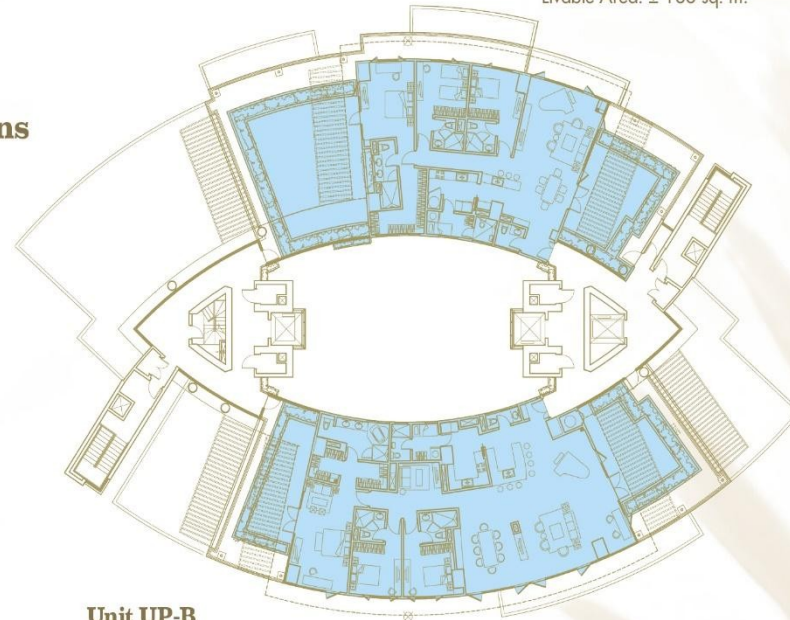


Unit UP-A 3BR Penthouse Suite

Total Area: ± 310 sq. m.

Livable Area: ± 188 sq. m.

Central Gardens



Unit UP-B 3BR Penthouse Suite

Total Area: ± 343 sq. m.

Livable Area: ± 262 sq. m.

Laguna Heights Drive Palms Pointe

- 2 BR Deluxe
- 2 BR Premiere
- 3 BR Deluxe
- 3 BR Premiere
- Garden Unit
- Penthouse Unit