

Facing The Palms Country Club

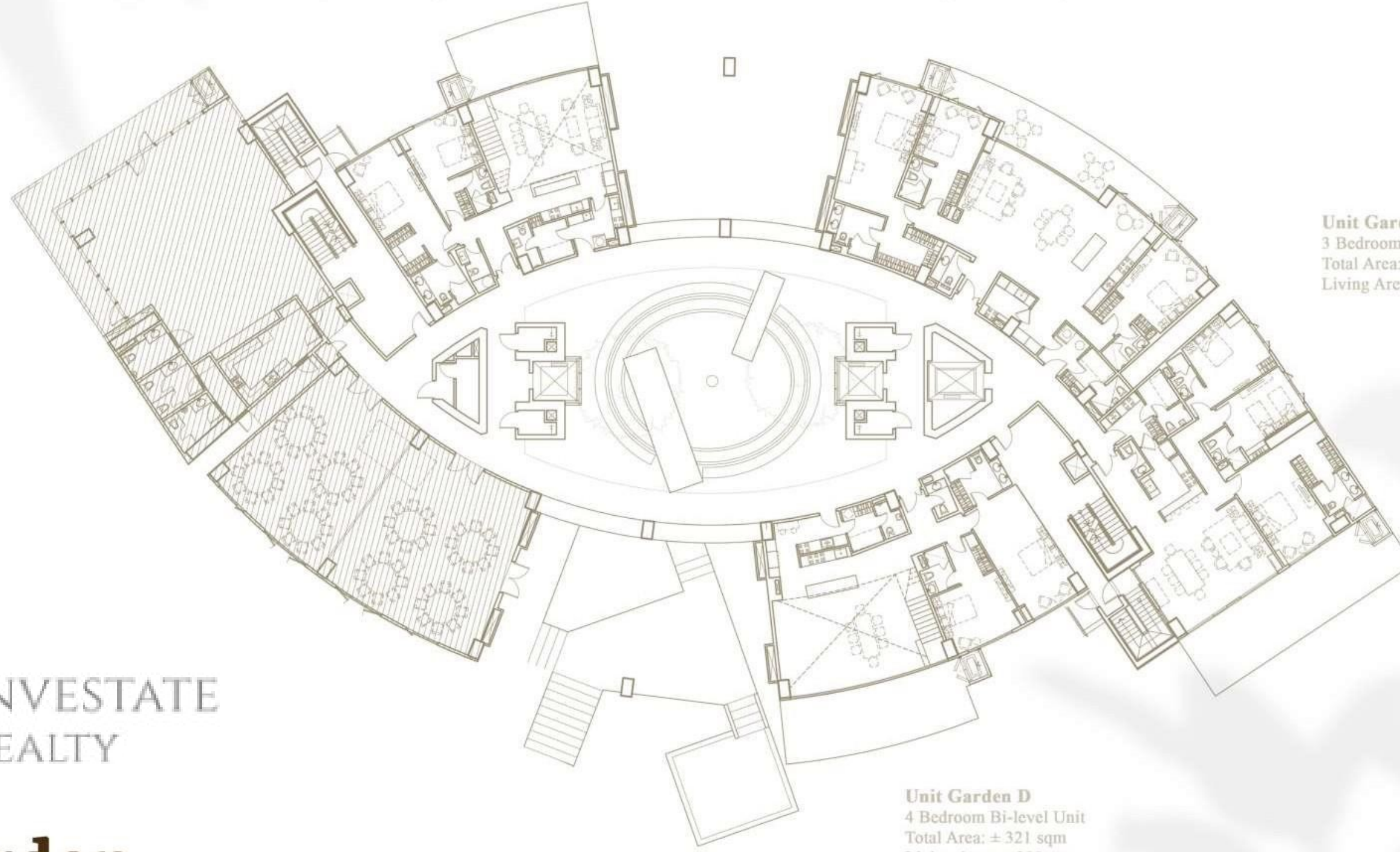
Tower 2

Unit Garden A
4 Bedroom Bi-level Unit
Total Area: ± 283 sqm
Living Area: ± 249 sqm

Unit Garden B
3 Bedroom Garden Flat
Total Area: ± 243 sqm
Living Area: ± 206 sqm

Unit Garden C
3 Bedroom Garden Flat
Total Area: ± 218 sqm
Living Area: ± 168 sqm

Unit Garden D
4 Bedroom Bi-level Unit
Total Area: ± 321 sqm
Living Area: ± 280 sqm



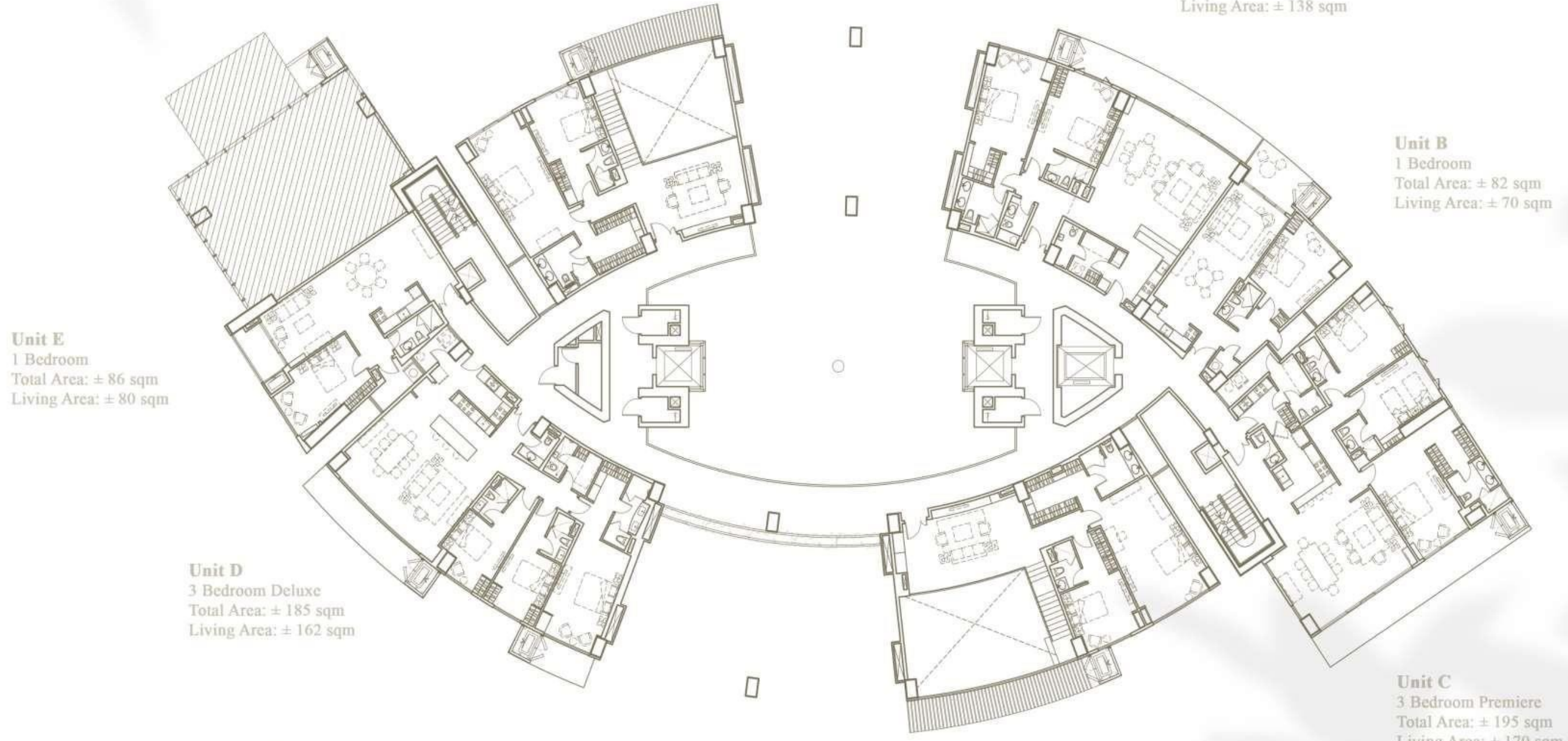
Facing the Central Garden



Garden



BOTANIKA
NATURE RESIDENCES



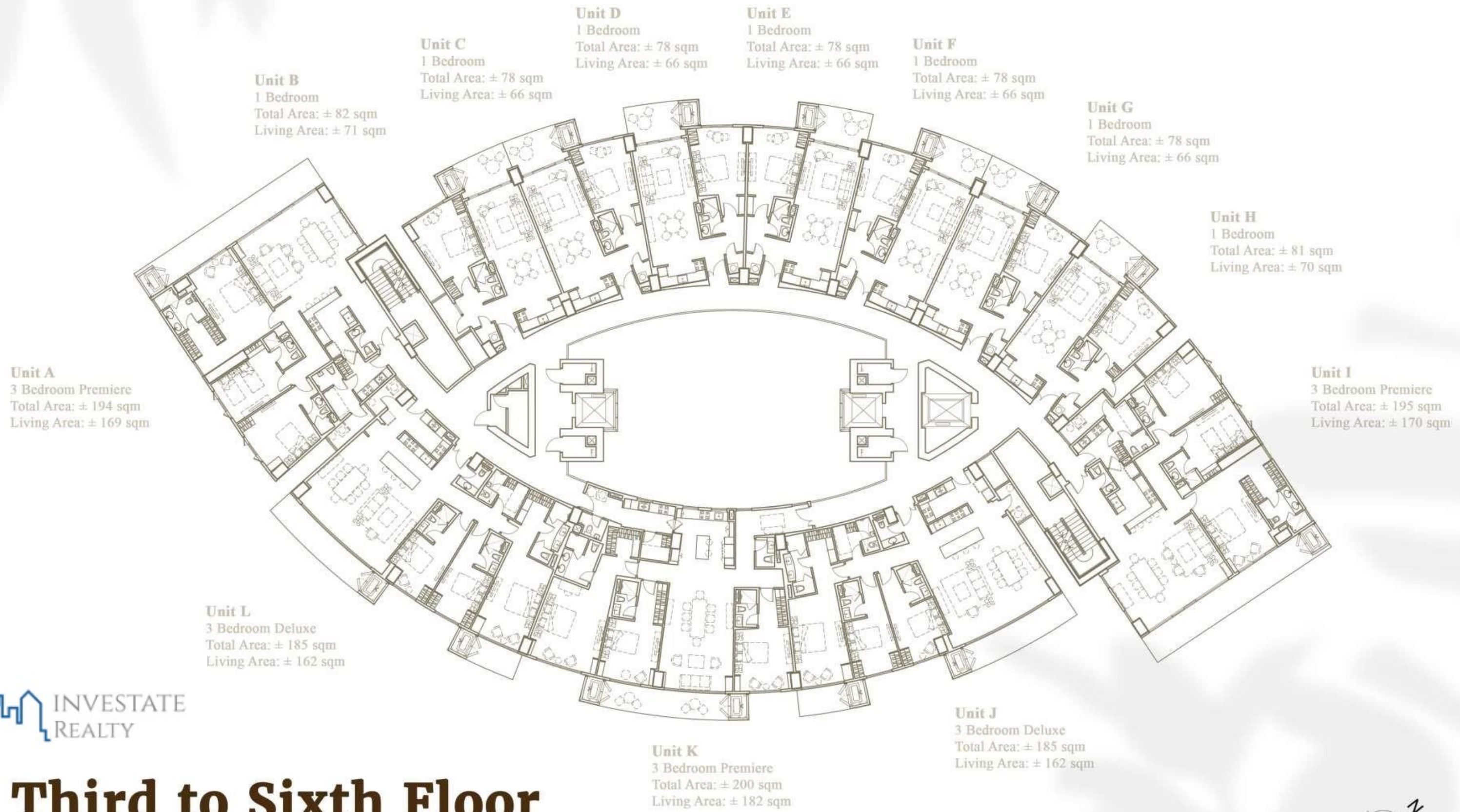
Second Floor

Facing the Central Garden



Facing The Palms Country Club

Tower 2

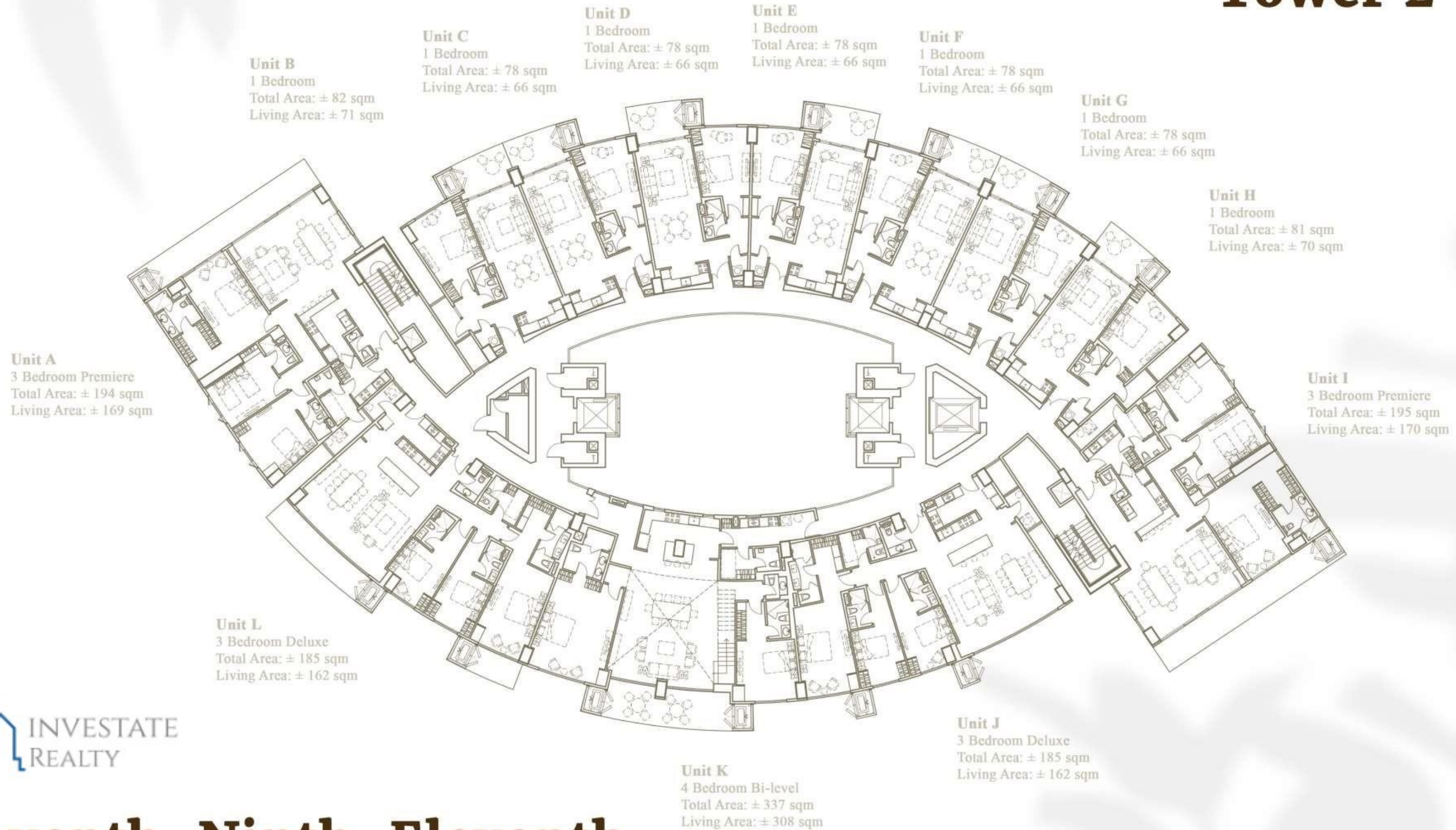


Third to Sixth Floor

Facing the Central Garden



Facing The Palms Country Club



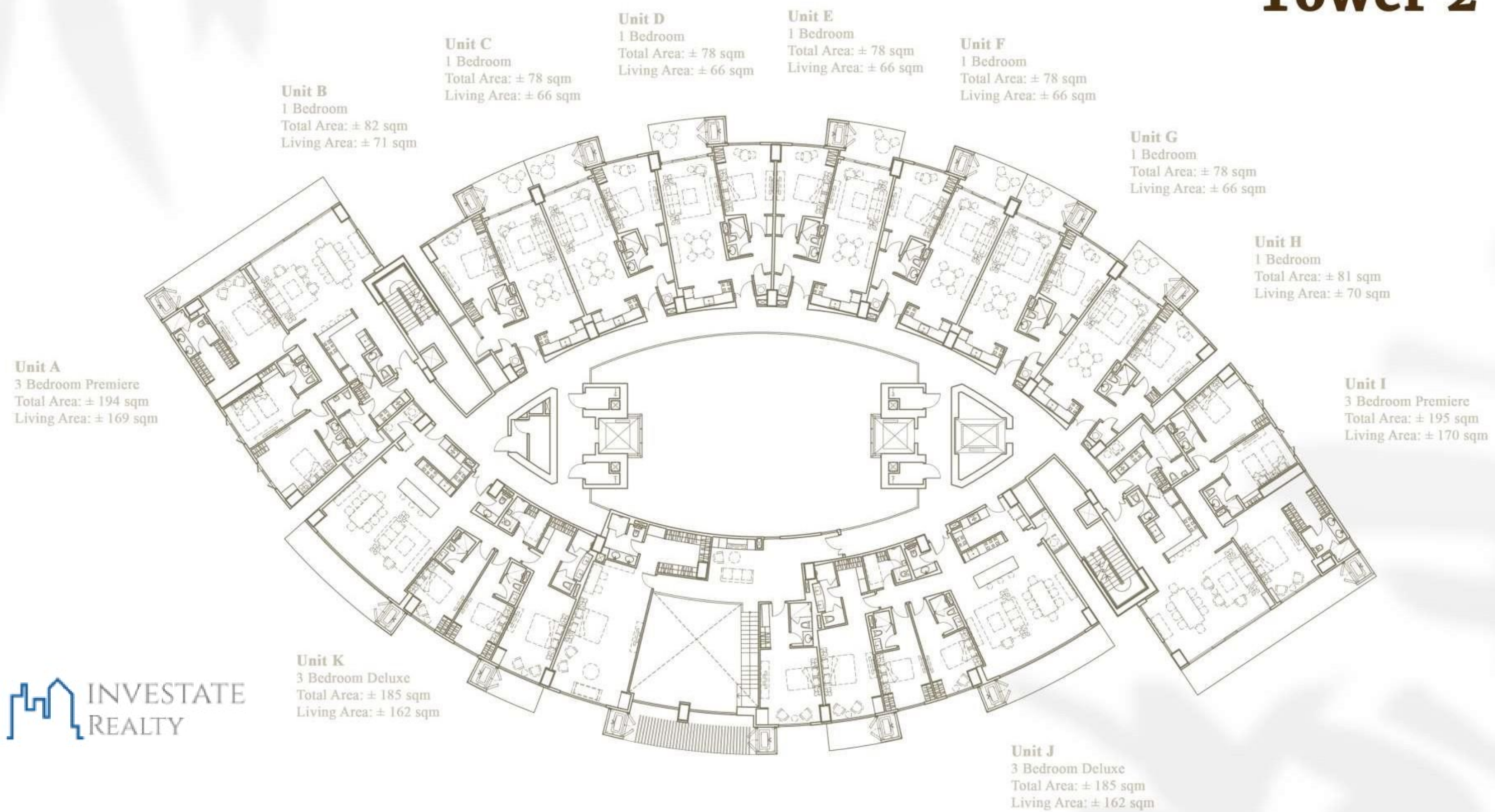
**Seventh, Ninth, Eleventh,
and Fourteenth Floors**

Facing the Central Garden



Tower 2

Facing The Palms Country Club



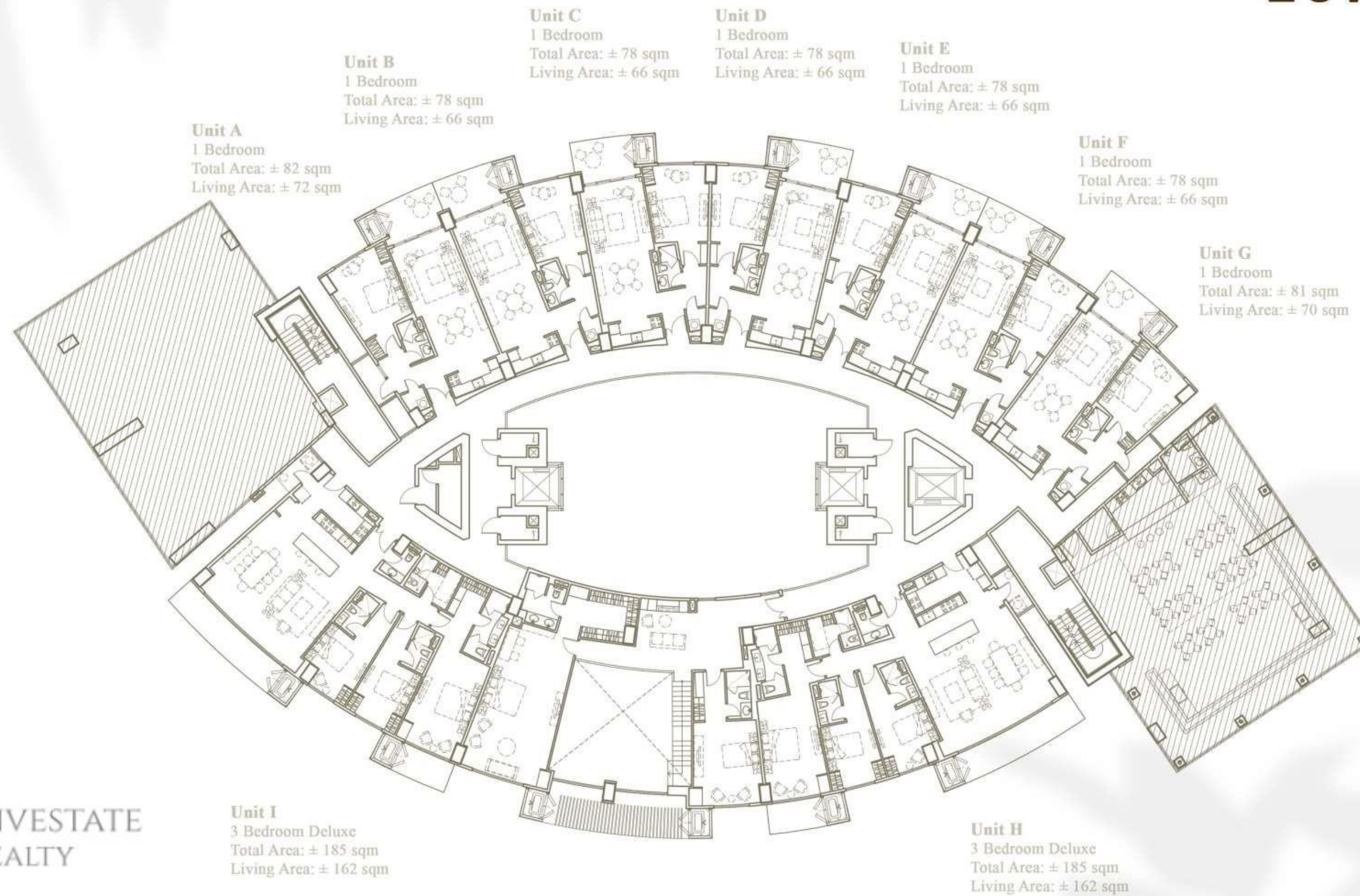
Eight, Tenth, and Twelfth Floor

Facing the Central Garden



BOTANIKA
NATURE RESIDENCES

Facing The Palms Country Club



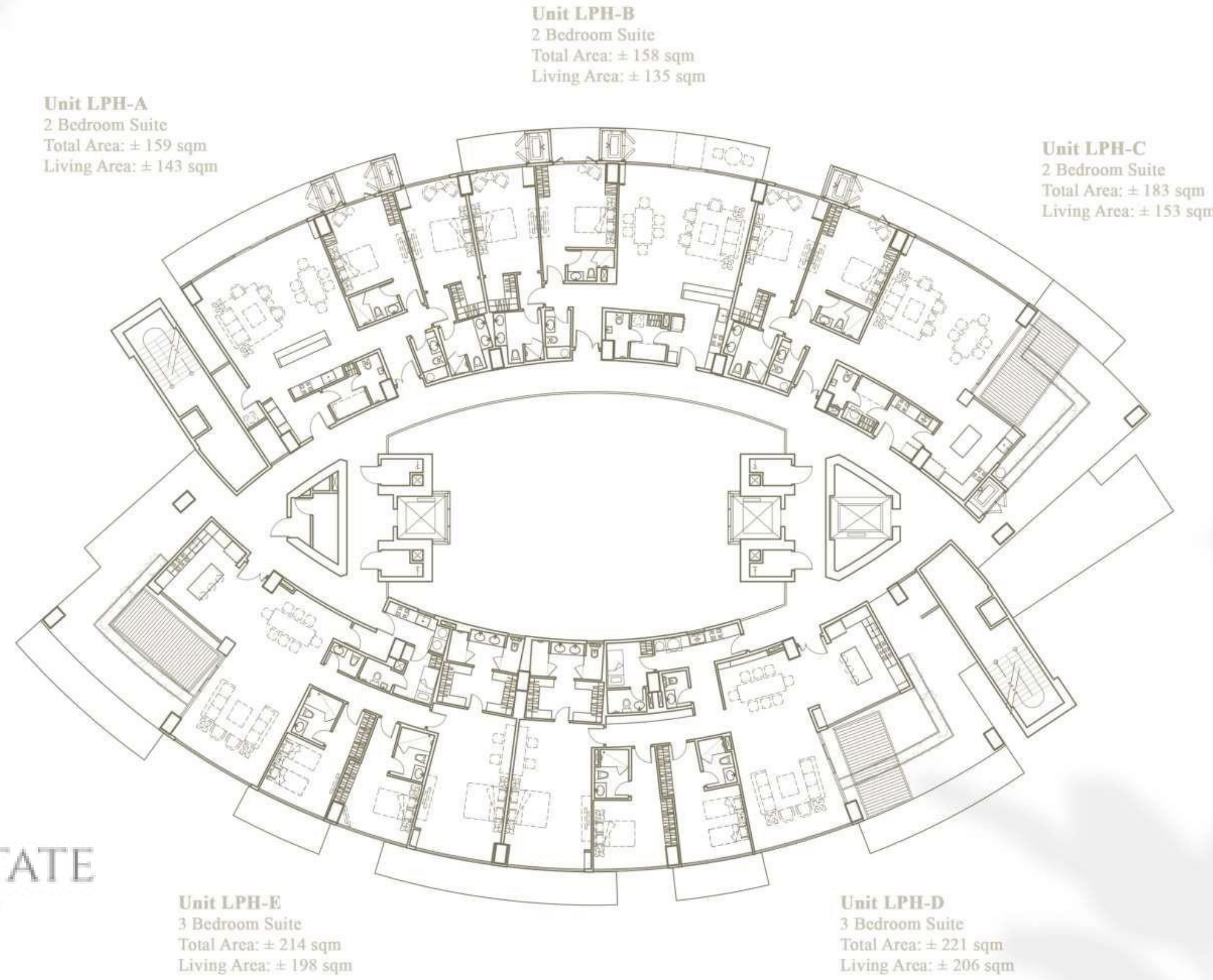
Fifteenth Floor

Facing the Central Garden



Facing The Palms Country Club

Tower 2



Lower Penthouse

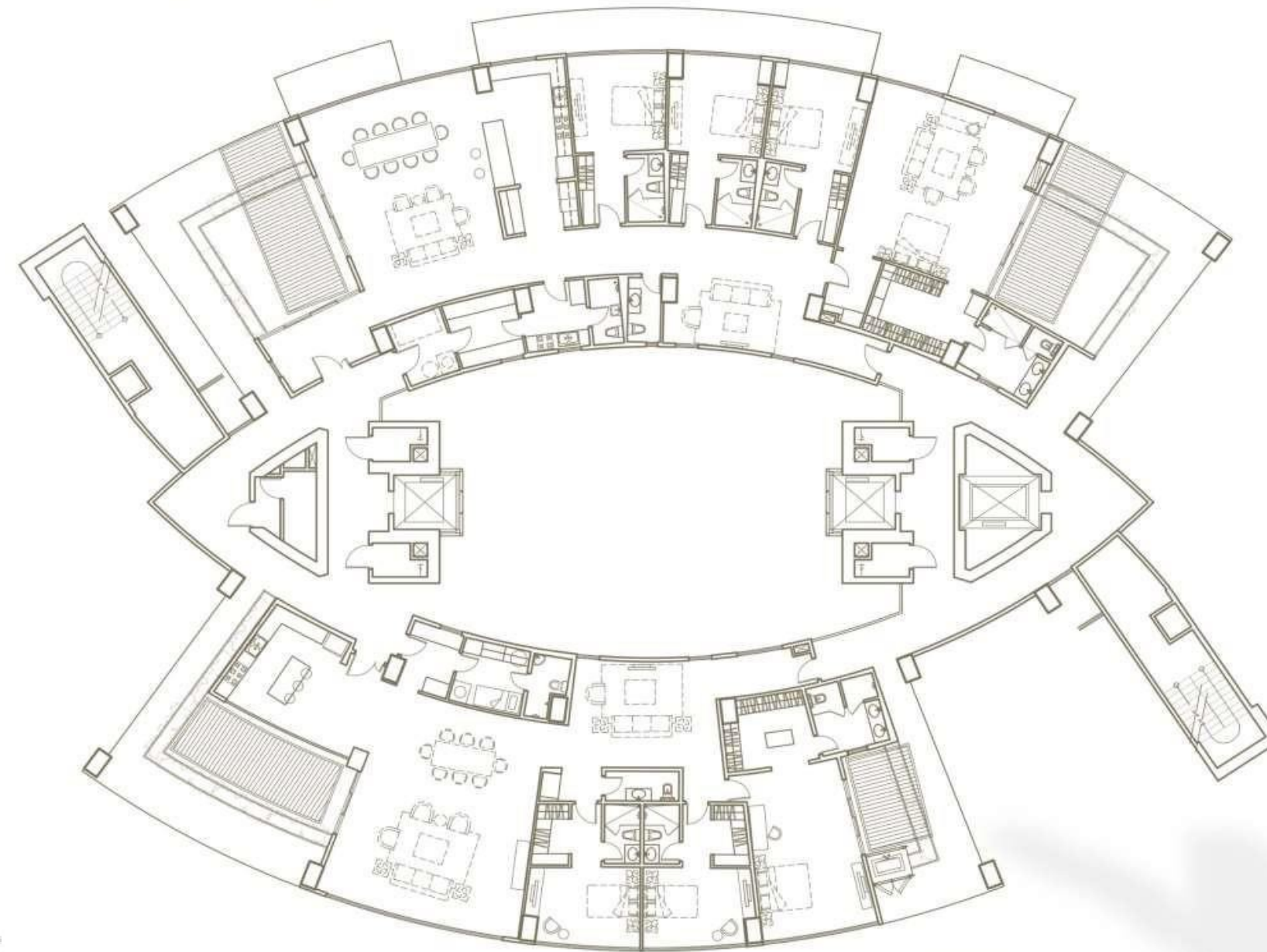
Facing the Central Garden



Facing The Palms Country Club

Tower 2

Unit UPH-A
4 Bedroom Suite
Total Area: ± 337 sqm
Living Area: ± 334 sqm



Unit UPH-B
3 Bedroom Suite
Total Area: ± 292 sqm
Living Area: ± 263 sqm



Upper Penthouse

Facing the Central Garden



BOTANIKA
NATURE RESIDENCES